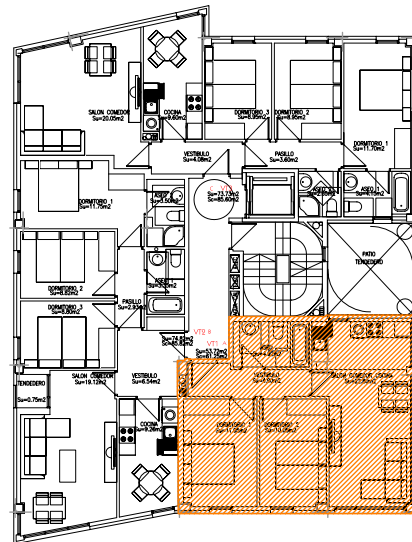
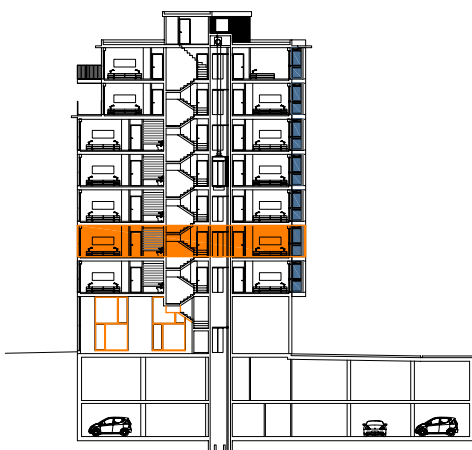


planta de vivienda

e=1/50



Superficies útiles

portal 1 2º - A = 53,72m <sup>2</sup>	garaje 4 = 20,77m <sup>2</sup>	trastero 4 = 5,71m <sup>2</sup>
---------------------------------------	--------------------------------	---------------------------------

0 1 2 3 4 5

escala gráfica 1:50

portal 1-2º a

19 VPO en la parcela 9.2A  
riberas de loiola

