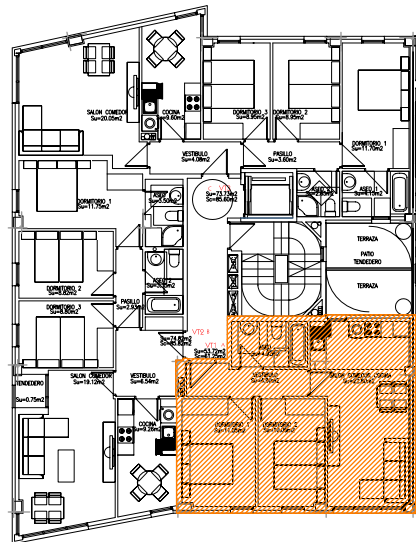
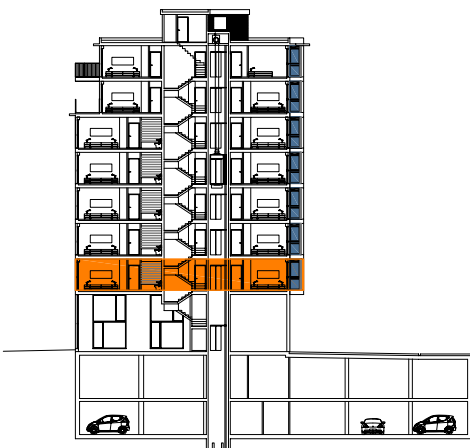


planta de vivienda

e=1/50



Superficies útiles

portal 1 1º - A = 53,72m ²	garaje 1 = 22,78m ²	trastero 1 = 5,71m ²
---------------------------------------	--------------------------------	---------------------------------

0 1 2 3 4 5

escala gráfica 1:50

portal 1-1º a

19 VPO en la parcela 9.2A
riberas de loiola

