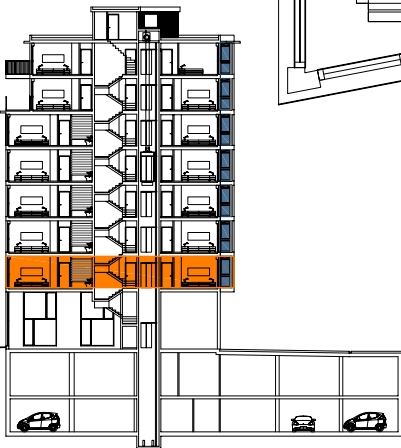
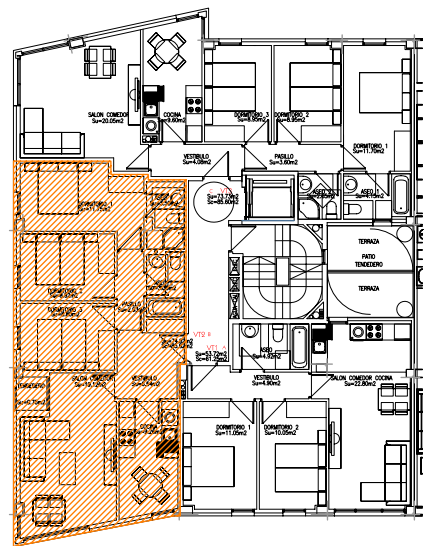


planta de vivienda e=1/50



Superficies útiles

portal 1 1º - B = 74,82m <sup>2</sup>	garaje 19 = 20,88m <sup>2</sup>	trastero 19 = 6,07m <sup>2</sup>
---------------------------------------	---------------------------------	----------------------------------

0 1 2 3 4 5

escala gráfica 1:50

19 VPO en la parcela 9.2A  
riberas de loiola

portal 1-1º b

